



## Easy-to-Install Angle Brackets Prevent Shifting Flow Tracks

**Hardware-free Dyna-Flo carton flow track installation is quick and cost-effective.**

Mallard custom mounting brackets feature a bendable tab to precisely position and secure your tracks. A better fit results in less shifting left to right as inventory flows down the lane. The retention angle helps minimize track damage, reducing replacement costs and downtime.

Take a look at how easy it is to secure your Dyna-Flo tracks! Simply grasp the retention angle with the adjustable wrench and bend upwards. No nuts or bolt assemblies are required.

NOTE: DEPENDING ON YOUR INSTALLATION, IT MAY BE NECESSARY TO BEND THE TAB BEFORE INSTALLING BRACKETS TO BEAMS.

Contact your Mallard gravity flow specialist for more information on carton flow system design and installation. Scan the QR code for a video demonstration of the Dyna-Flo retention angle installation.

TO VIEW VIDEO  
SCAN HERE



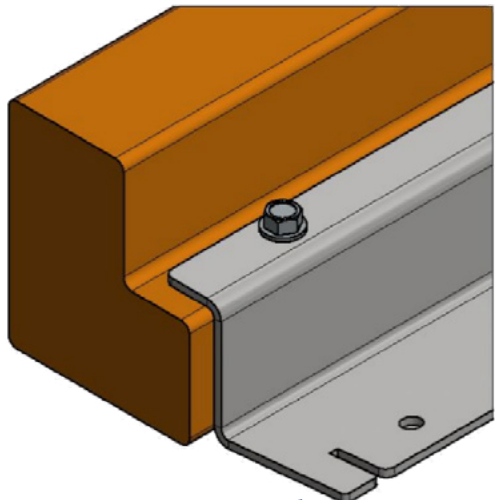
OR CLICK  
<https://youtu.be/qP0RAiVk2-o>



## RETENTION ANGLE – TAB BENDING PROCEDURE

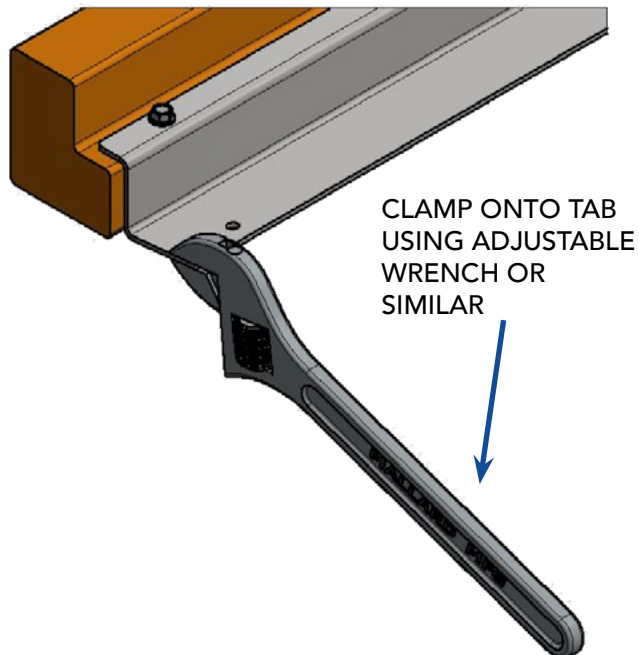
NOTE: DEPENDING ON YOUR INSTALLATION IT MAY BE NECESSARY TO BEND THE TAB PRIOR TO INSTALLING BRACKETS TO BEAMS.

### STEP 1

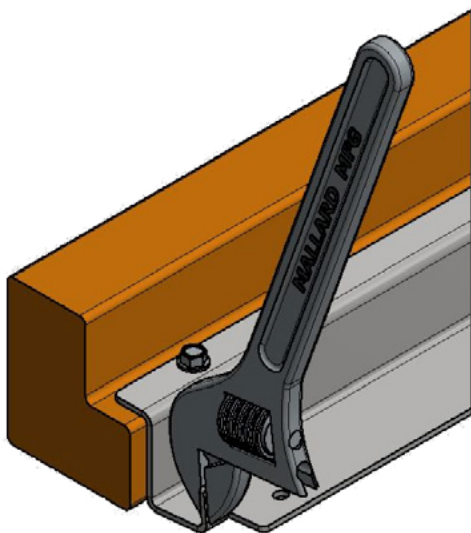


LOCATE SLOTTED TAB ON  
EACH END OF BRACKET

### STEP 2



### STEP 3



BEND TAB UP 90°

### STEP 4 - FINISHED

